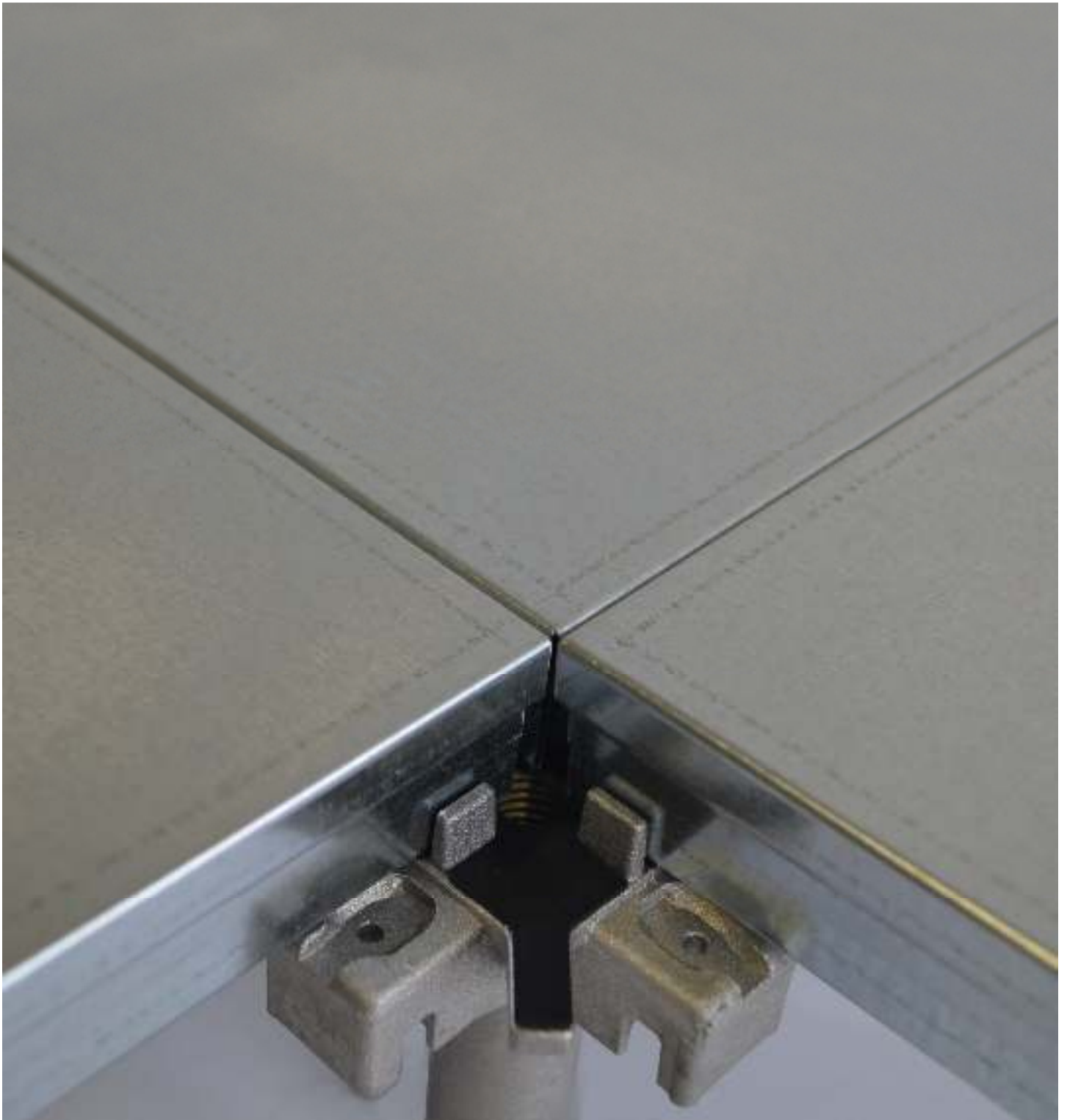


ENA

ENCAPSULATED STEEL BOX PANELS



CRESPI

e-mail: salesdpt@crespisa.com/export@crespisa.com/commerciale@crespisa.com
website: www.crespisa.com - <http://www.facebook.com/public/Crespi-Spa-Raised-Floors>
Via del Lago, 2 - 20060 Liscate (Milano - Italia) - Tel. n° 0039.02.95351062

ENA – ENCAPSULATED STEEL BOX PANELS

PERFORMANCES	ENA 1	ENA 2	ENA 3	ENA 4	ENA 5
DIMENSIONS	600x600x23mm	600x600x29mm	600x600x39mm	600x600x23mm	600x600x29mm
TOLERANCES OF DIMENSIONS	EN 12825 CLASS 1	EN 12825 CLASS 1	EN 12825 CLASS 1	EN 12825 CLASS 1	EN 12825 CLASS 1
STRUCTURAL CORE	High resistance chipboard	High resistance chipboard	High resistance chipboard	Calcium sulphate	Calcium sulphate
DENSITY OF STRUCTURAL CORE	750kg/m ³ minimum	750kg/m ³ minimum	750kg/m ³ minimum	1100kg/m ³ minimum	1100kg/m ³ minimum
BOXES	Galvanized Z140 steel	Galvanized Z140 steel	Galvanized Z140 steel	Galvanized Z140 steel	Galvanized Z140 steel
WORKING LOAD	CLASS 1 EN 12825	CLASS 3 EN 12825	CLASS 5 EN 12825	CLASS 1 EN 12825	CLASS 3 EN 12825
FLEXION AT WORKING LOAD	CLASS A EN 12825	CLASS A EN 12825	CLASS A EN 12825	CLASS A EN 12825	CLASS A EN 12825
SECURITY FACTOR	2 EN 12825	2 EN 12825	2 EN 12825	2 EN 12825	2 EN 12825
ULTIMATE LOAD	CLASS 1 EN 12825	CLASS 3 EN 12825	CLASS 5 EN 12825	CLASS 1 EN 12825	CLASS 3 EN 12825
FIRE REACTION	Bfl-s1 EN 13501	Bfl-s1 EN 13501	Bfl-s1 EN 13501	A1 Incombustible	A1 Incombustible
FIRE RESISTANCE	REI 30r EN 13501	REI 30r EN 13501	REI 30r EN 13501	REI 30r EN 13501	REI 30r EN 13501
IMPACT INSULATION	ΔLw 16 EN 140-8	ΔLw 20 EN 140-8	ΔLw 21 EN 140-8	ΔLw 18 EN 140-8	ΔLw 22 EN 140-8
WEIGHT	8,35kg/each	10,00kg/each	12,70kg/each	11,35kg/each	13,75kg/each
PACKING	n° 40 panels/pallet	n° 40 panels/pallet	n° 30 panels/pallet	n° 40 panels/pallet	n° 30 panels/pallet
PALLET	700X600X1000mm 345kg/pallet	700X600X1300mm 410kg/pallet	700X600X1300mm 395kg/pallet	700X600X1000mm 460kg/pallet	700X600X1000mm 420kg/pallet

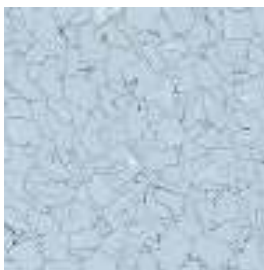
The **ENA** panels are installables with any type of the **CRESPI** understructures MR4 – MR4H – MR8 – MR8H – MR10 – MR13 and can made for the Antiseismic **QUAKE PROOF** System.

ENA – UPPER COVERINGS

All products were selected by **CRESPI** according to partner companies that produce with high-tech production process. All products are manufactured with eco-sustainable process according to the certifications Leed – Bream – FSC – California specification 01350.



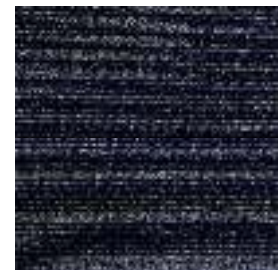
Vinyl tiles



Rubber tiles



Carpet Tiles



High tech woven vinyl

Porcelain



Wood parquet



Stainless steel



MAGNETIC TILES

All the loose lay tiles are achievable with an innovative high-tech magnetic solution that eliminates the use of the adhesives.

CRESPI
Innovation and tradition since 1958

RAISED ACCESS FLOORS SINCE 1958



CRESPI

e-mail: salesdpt@crespispa.com/export@crespispa.com/commerciale@crespispa.com
website: www.crespispa.com - <http://www.facebook.com/public/Crespi-Spa-Raised-Floors>
Via del Lago, 2 - 20060 Liscate (Milano - Italia) - Tel. n° 0039.02.95351062